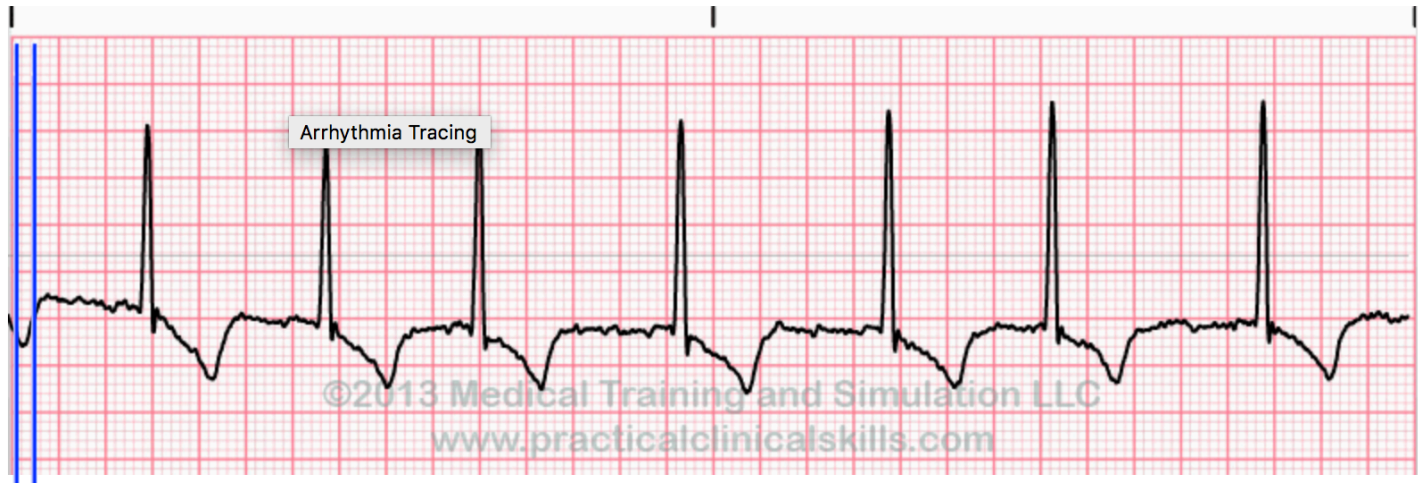
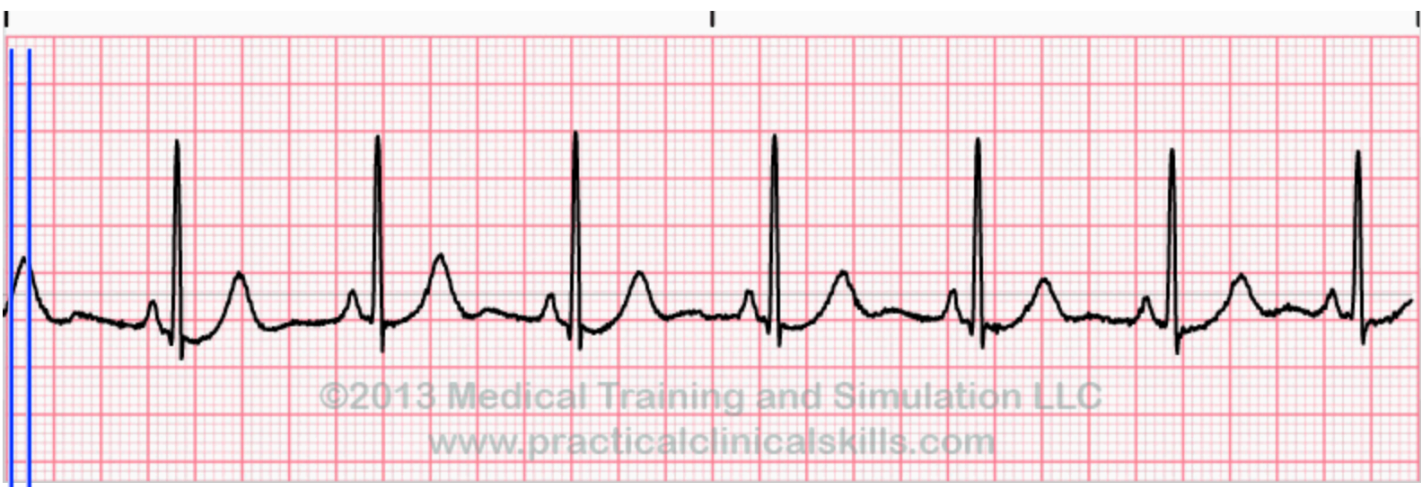


For each of the following ECGs determine the atrial rate, ventricular rate, describe/name the ECG, and describe your approach to management of a patient presenting with this ECG.

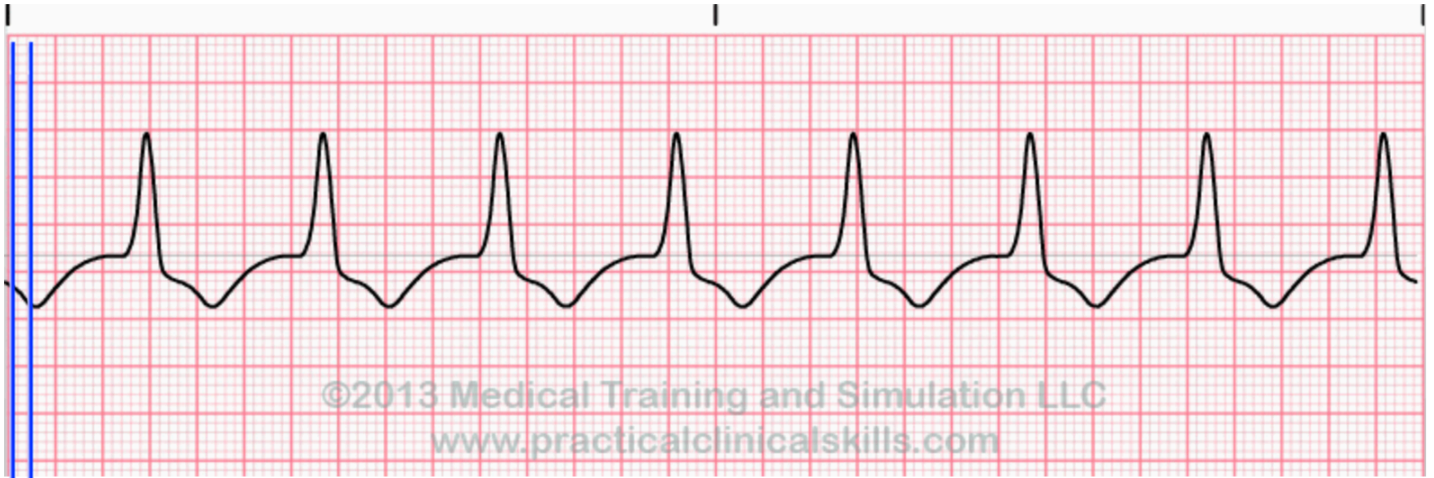
1. 50mm/s. 7y F/S doberman with high-grade heart murmur, coughing, collapse. Thready pulses.



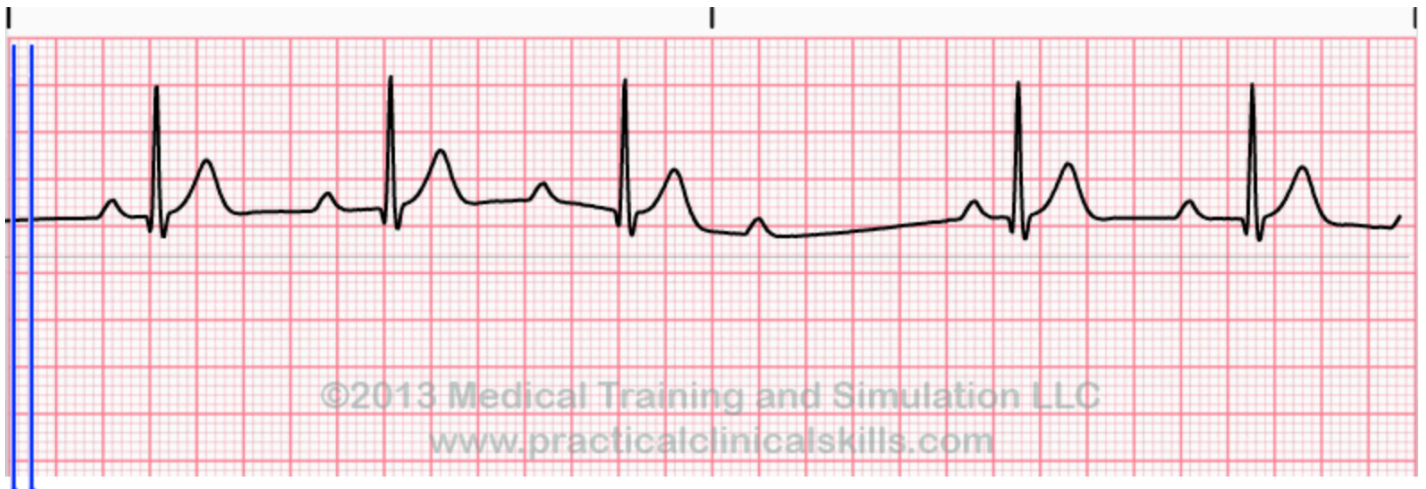
2. 25mm/s. 4y M/C labrador retriever with 3 day history of coughing with a terminal retch. Tracheal sensitivity/honking cough when trachea palpated. Exam is otherwise normal.



3. 25mm/s. 12y F/s German Shepherd 24h post-splenectomy.



4. 5y Jack Russel Terrier immediately post-op bilateral MPL surgery. Routine anesthesia, standard drugs, etc. Previously healthy dog.



5. 12y male castrated Labrador mix with 3-day history of progressive lethargy, inappetence, vomiting. Examination identifies mild abdominal pain, moderate dehydration, melanic diarrhea.

pH	7.21	Na	158	Crea	10.3
pCO ₂	31	K	44	Glucose	108
HCO ₃	11.3	Cl	114	Alb	2.7
BE	-14.2	iCa	1.27	Phos	17.6
sO ₂	68	Lactate	2.4		
pO ₂	34				

Describe the blood gas and electrolyte panel using the traditional approach to acid-base.

Describe the blood gas using the strong ion difference & SIG approach to acid-base